



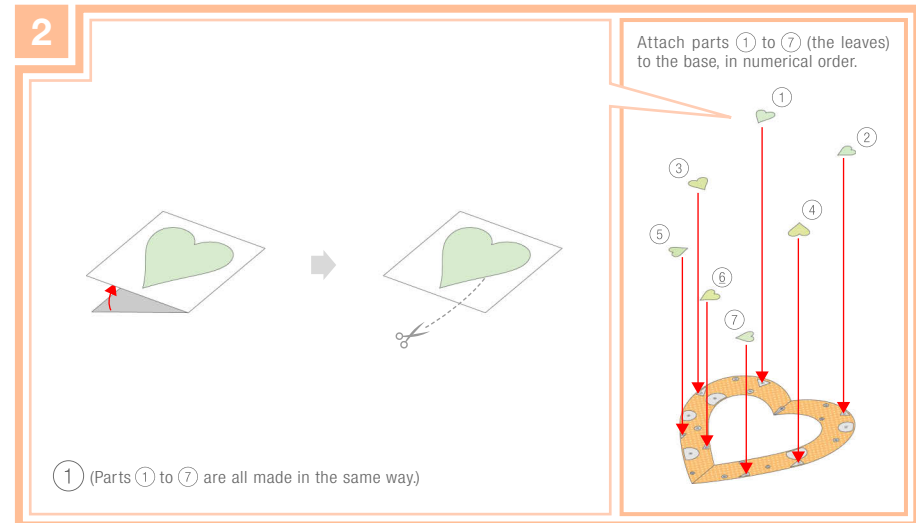
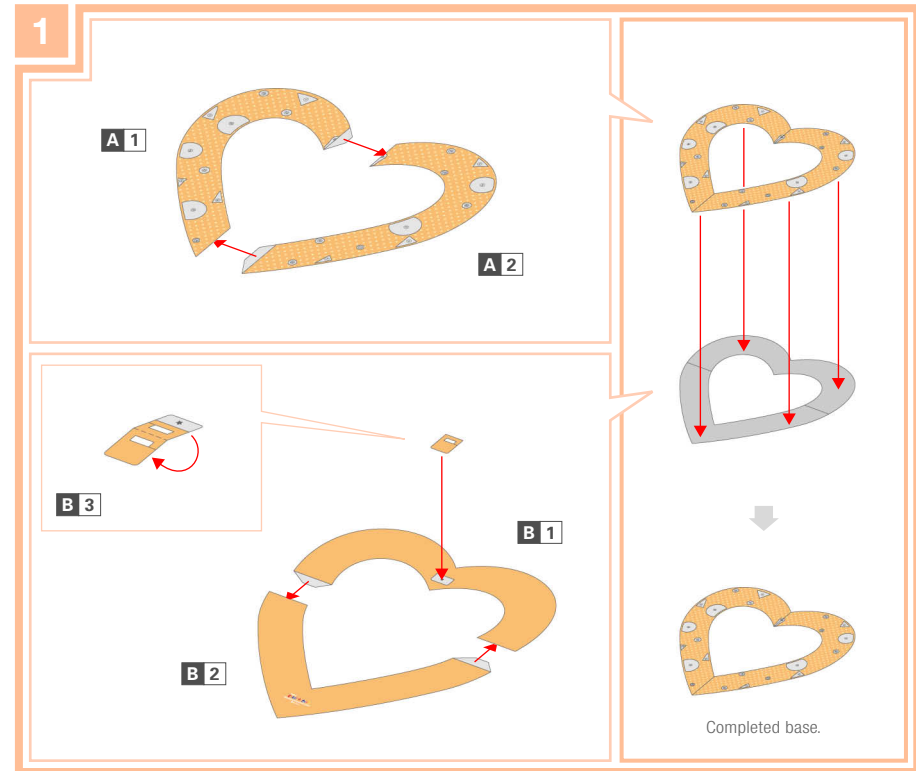
● **Pattern:** 12 sheets ● **Assembly Instructions:** 3 sheets ● **Number of parts:** 55

You will need:

Scissors, Glue, Pencil, Photos (5 photos that you are able to cut)

----- Mountain fold ——— Scissors line □ Glue spot ✂ Cut out

Caution: Glue, scissors and other tools may be dangerous to young children so be sure to keep them out of the reach of young children.



5

If you add curves to the petals they will appear more 3-dimensional.

Attach parts (13) to (19) (the flowers:S) to the base, in numerical order.

(13)-a (Parts (13)-a) to (19)-a are all made in the same way)

(13) (Parts (13) to (19) are all made in the same way.)

6

If you add curves to the petals they will appear more 3-dimensional.

Attach parts (20) to (22) (the flowers:L) to the base, in numerical order.

(20)-b (Parts (20)-b) to (22)-b are all made in the same way)

(20)-a (Parts (20)-a) to (22)-a are all made in the same way)

(20) (Parts (20) to (22) are all made in the same way.)

7

If you add curves to the petals and butterfly's wings they will appear more 3-dimensional.

Attach part (23) (the butterfly decoration) to the base.

(23)-d

(23)-c

(23)-b

(23)-a

(23)

Complete! Hang it up on the wall for display.