

Model **BUT IS IT ART?**

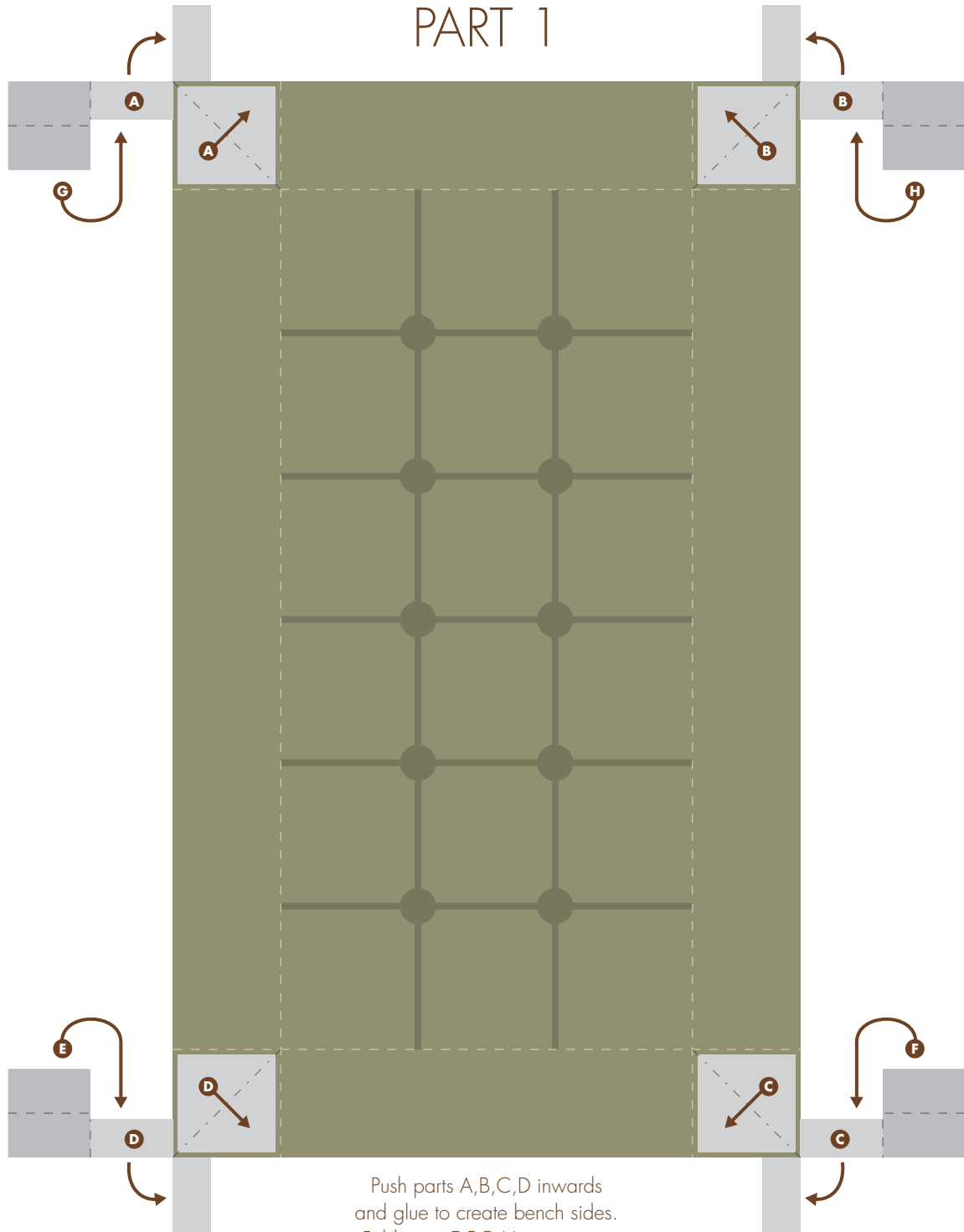
Cut -----

Hill Folds - - - - -

Valley Folds - - - - -

Glue Order **A B C D E F G H**

PART 1



Push parts A,B,C,D inwards and glue to create bench sides. Fold parts E,F,G,H over parts A,B,C,D to create bench legs.



MARSHALL ALEXANDER
PAPER ENGINEER

Model **BUT IS IT ART?**

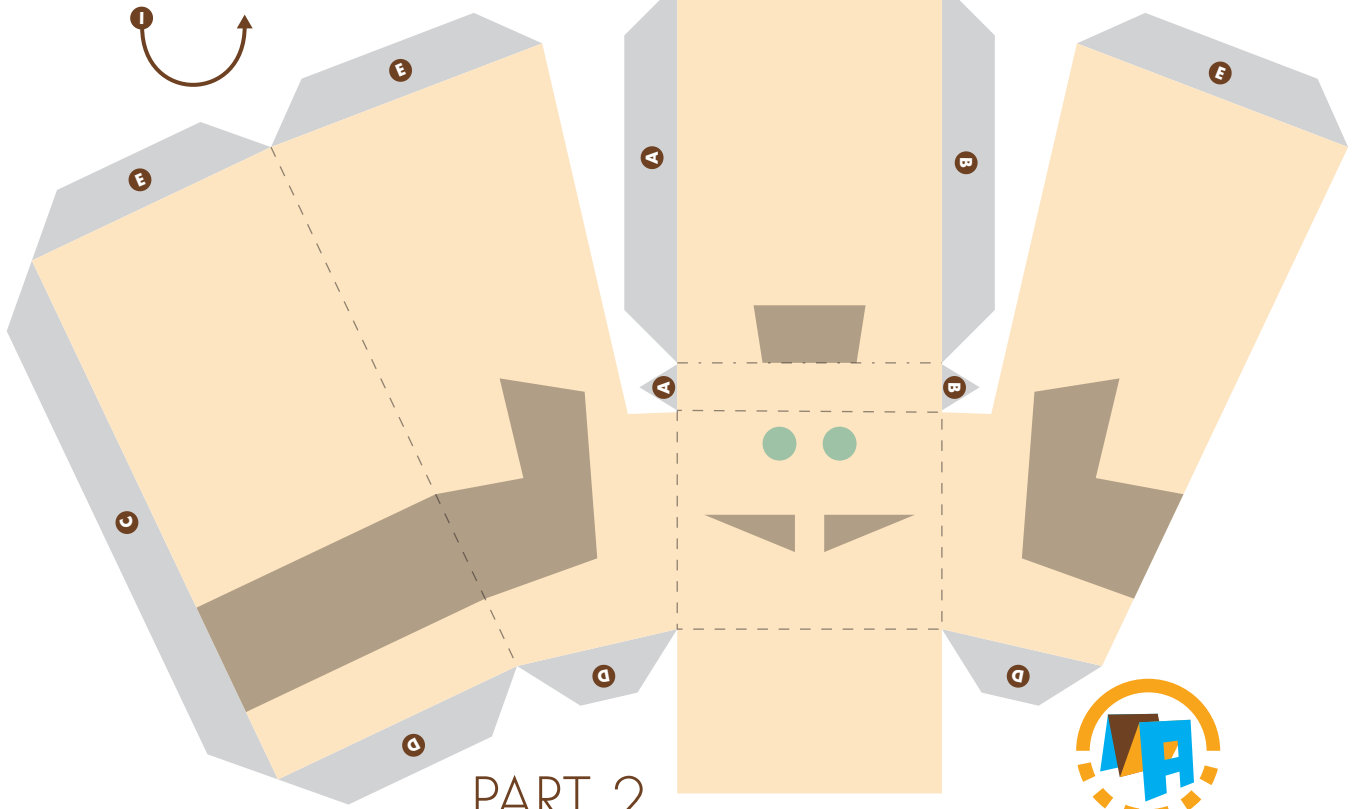
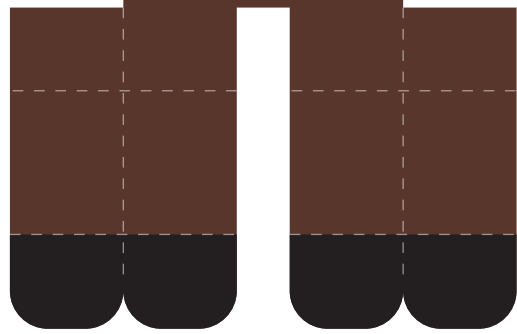
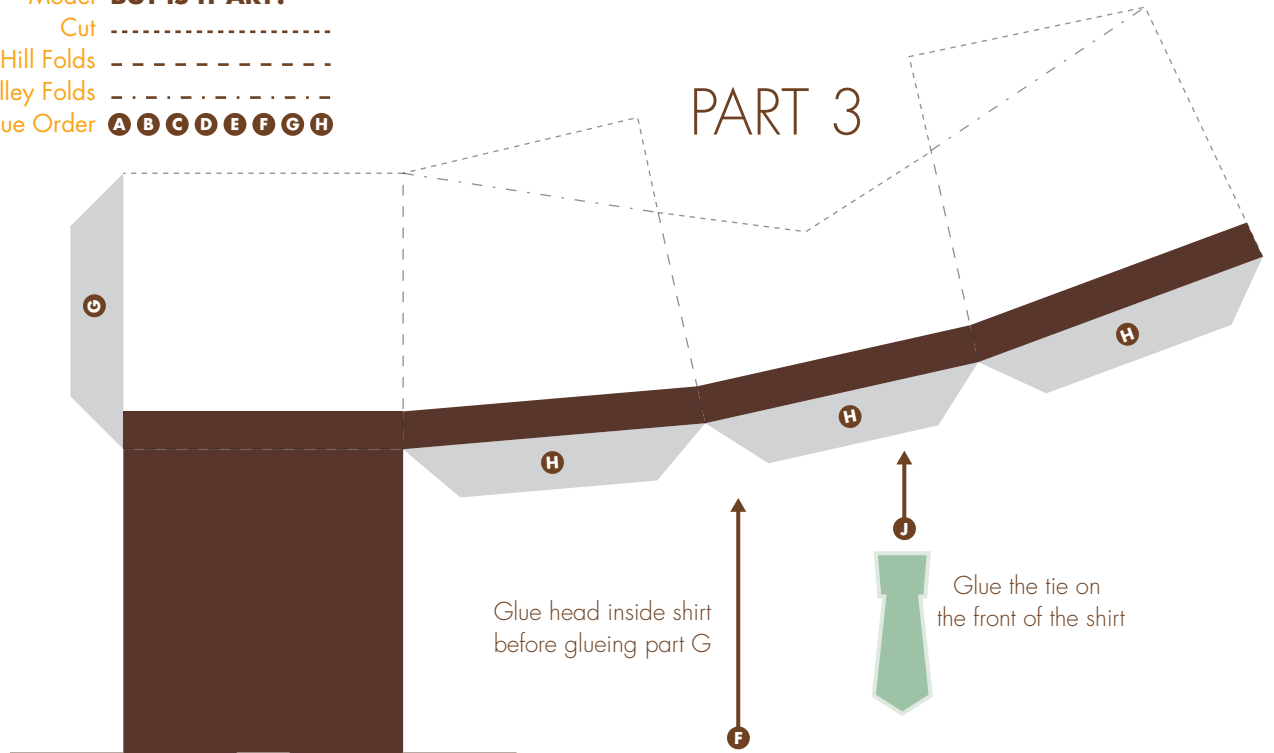
Cut -----

Hill Folds - - - - -

Valley Folds -----

Glue Order **A B C D E F G H**

PART 3



PART 2



MARSHALL ALEXANDER
PAPER ENGINEER

Model **BUT IS IT ART?**

Cut -----

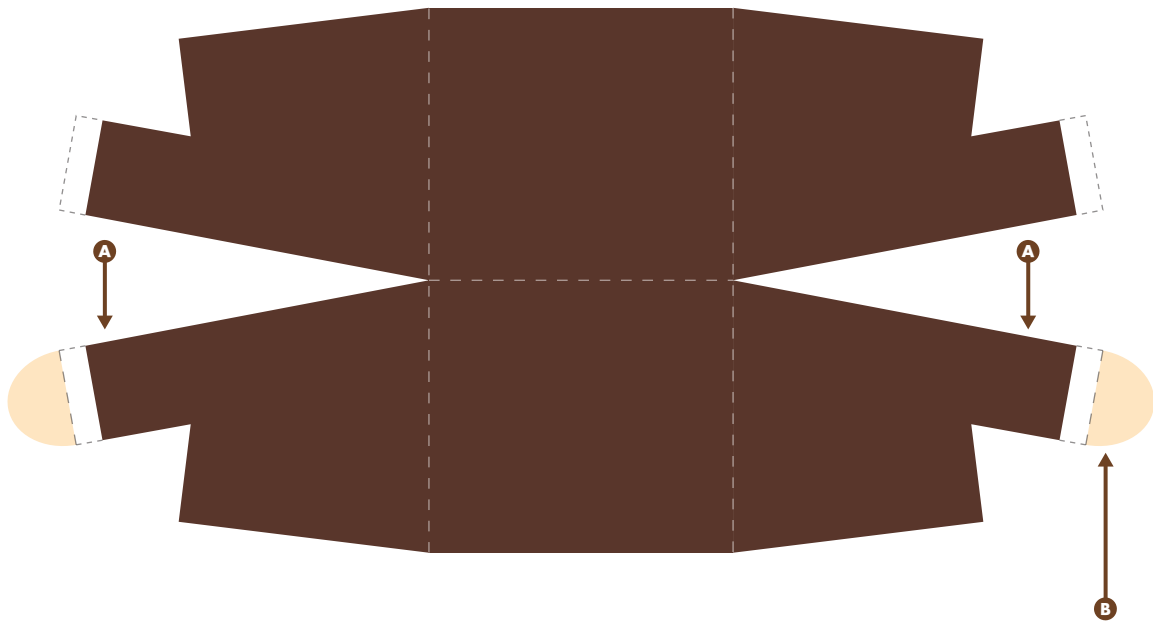
Hill Folds - - - - -

Valley Folds -----

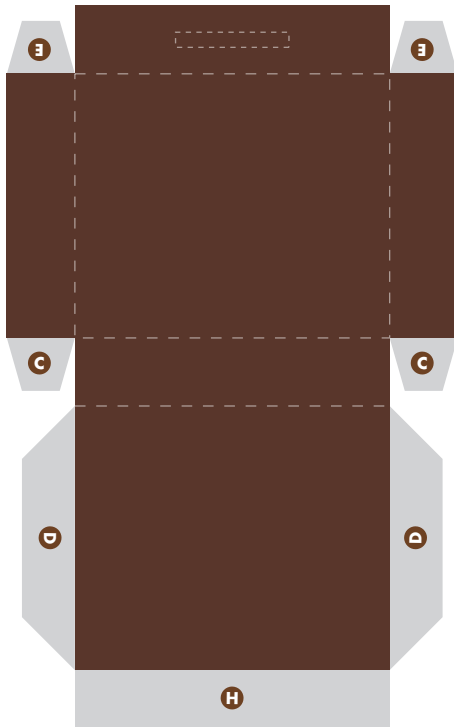
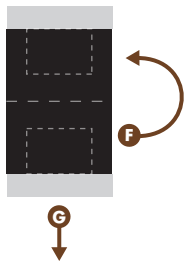
Glue Order **A B C D E F G H**

PART 4

Fold over and glue part 4 to create the jacket and glue it around part 3 to finish the character.

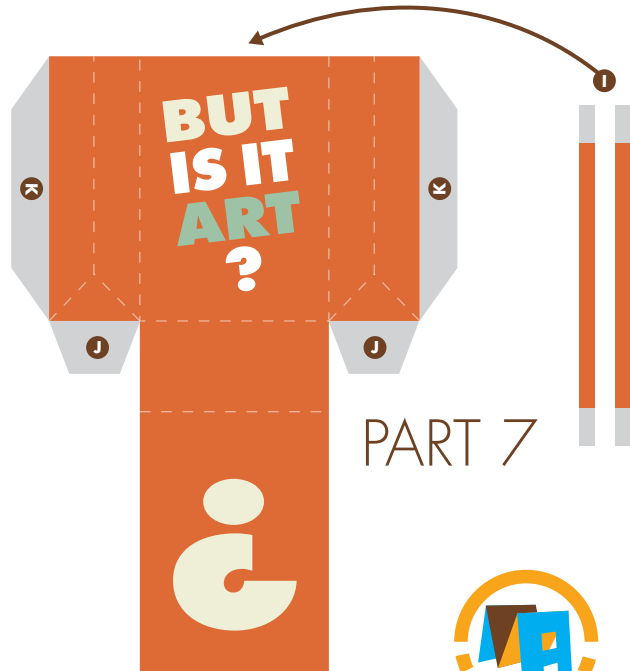


PART 6



PART 5

Prefold part 5 so it looks like a little folder and glue it to the hands of part 3



PART 7



MARSHALL ALEXANDER
PAPER ENGINEER